

*k-tech*



**FORMBASE®**

*purely a matter of form*

**FORMBASE- purely a matter of form**

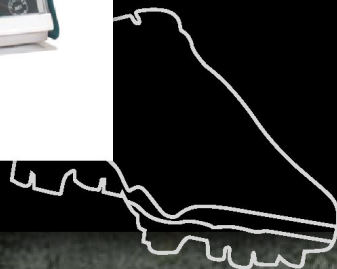


**The Formbase principle**

*Shoes are made to fit feet, and not the other way around*

Top form for your equipment: FORMBASE is a handy heating system that is designed to get maximum performance out of sports shoes, indoor shoes and other equipment by creating the best possible fit. The compact, easy and rugged system caters to specialist retailers, clubs, and ambitious athletes alike.

What makes FORMBASE stand out is its proverbial longevity. Further key benefits are the simplicity of use and precision in heating the shoe to the right temperature. You can look forward to relying on this team player for years to come.

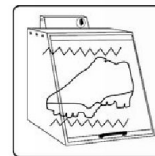
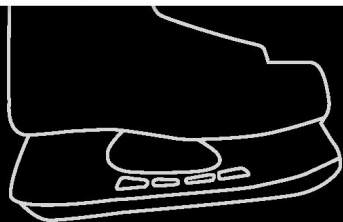
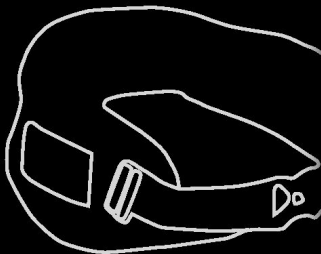


# Application

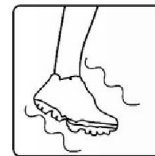
## Here's how to get shoes ready for training

It's this easy: Pre-select the duration, place the shoes inside, and after a few minutes, put on a pair of cosy, warm shoes that are ready for any type of athletic action.

For specially thermoformed materials, a single application should be sufficient. However, we warmly recommend forming materials repeatedly. For classic shoe materials like leather or plastic, FORMBASE works miracles with both new and used shoes prior to every use.



**1.** Bake it!



**2.** Form it!



**3.** Go for it!

# Your sport

## FORMBASE – the perfect fit for top performance

FORMBASE shows its strengths in every area that requires a good, comfortable fit. Whether it's football, cycling, ice hockey, or American football. FORMBASE is even excellently suited to applications such as adjusting hipbelts.

Renowned sporting and outdoor brands have already been using FORMBASE for years – including America's professional football league, the NFL.



FORMBASE provides a perfect fit in two ways:

**1. Shoes without thermoelastic components**, e.g. football shoes, become more supple when heated every time the system is used, which means they fit just as well right from the start of training as if they had been worn for a long time.

**2. Shoes featuring thermoelastic materials (EVA)**, such as found e.g. in ski boots, cycling shoes or in ice hockey skates, are heated once and permanently set into form.

Reebok

SHIMANO

GRAF



BAUER



## Your design

*Hot looks - for both home and away games*

Use your FORMBASE to add an optical accent: On request, we can supply FORMBASE with your logos on the cover and painted in your company/club colours. The interior colour of the housing may be selected independently from the exterior colour. Let your imagination run wild: Picture your FORMBASE in your own colours with your club's logo...



## Technical specifications

<b>Model name</b>	Heating System TFHS-1
<b>Type</b>	Convection oven
<b>Power supply</b>	230 VAC 50 Hz
<b>Power consumption</b>	2332 W 10 A
<b>Temperature range</b>	between 40°C and 130°C (104°F–266°F) (please specify this when ordering)
<b>Dimensions</b>	(HxWxD) approx. 40 cm x 35 cm x 42 cm; approx. 15.7" x 13.8" x 16.5"
<b>Weight</b>	16.5 kg
<b>Certificates</b>	CE, SEV, CB

<b>Model name</b>	Heating System TFHS-2
<b>Type</b>	Convection oven
<b>Power supply</b>	115 VAC 60 Hz
<b>Power consumption</b>	1641 W 15 A
<b>Temperature range</b>	between 40°C and 117°C (104°F–243°F) (please specify this when ordering)
<b>Dimensions</b>	(HxWxD) approx. 40 cm x 35 cm x 42 cm; approx. 15.7" x 13.8" x 16.5"
<b>Weight</b>	16.5 kg
<b>Certificates</b>	UL, CSA

## Interested?

FORMBASE isn't available through retail – it can only be ordered directly from us. The advantage for you: No unnecessary costs plus first-hand advice. And that is important since there are technical differences depending on the area of application, ranging from individual device configurations to colour schemes. Feel free to get in touch with us.

[WWW.MYFORMBASE.COM](http://WWW.MYFORMBASE.COM)

# FORMBASE®

k-tech GmbH  
Jakob-Stadler-Platz 11  
78467 Konstanz

T: (+49) 7531 / 94218-0  
F: (+49) 7531 / 94218-22  
@: kontakt(at)k-tech.de